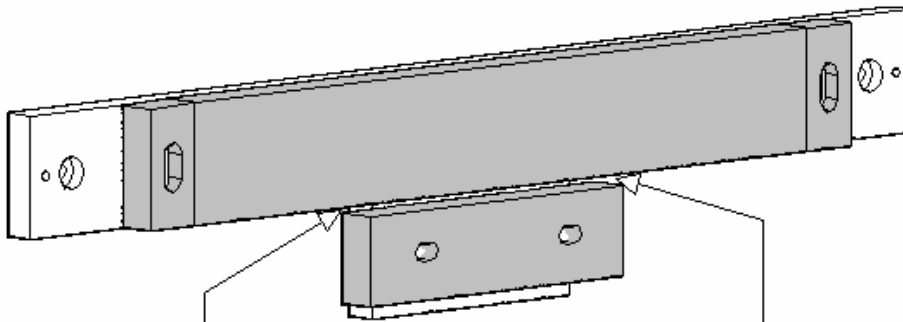


**** (SCREWS ARE SUPPLIED IN THE HARDWARE KIT TO MOUNT THE READER HEAD. THE METRIC SCREWS FOR THE M SERIES SCALES ARE NOT NECESSARY.)****

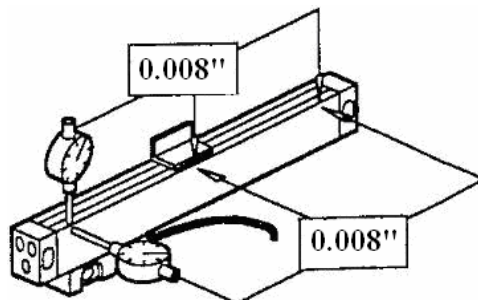
SPACING



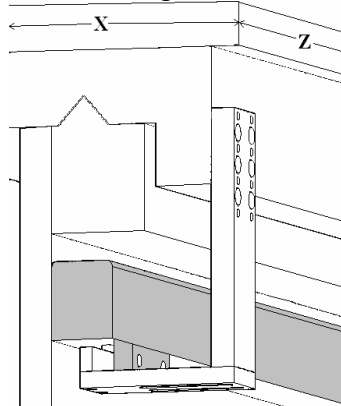
For M Series scales, the spacing between the scale and the reader head MUST be 0.040 inches (1mm) \pm 0.02 inches (0.5mm)

For C Series scales, the spacing between the scale and the reader head MUST be 0.060 inches (1.5mm) \pm 0.024 inches (0.6mm)

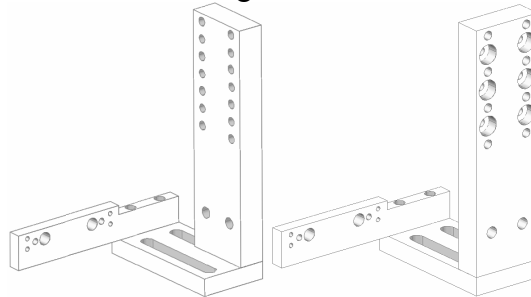
ALIGN THE SIDES OF THE SCALE by indicating the ends and the center.



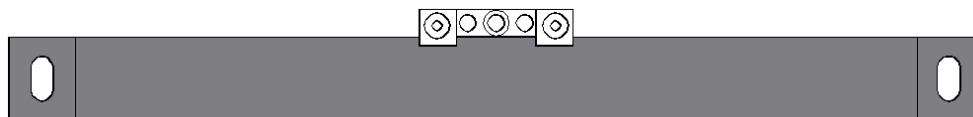
1. Determine the best location for mounting the scale and the reader head on the back of the machine bed. Check to make sure the machine still has full travel without over traveling the scale.
2. Mount the scale to the back of the machine bed by tapping two holes for ¼-20 SHCS. Adjust the scale parallel and square to the carriage travel per scale manual specifications for the scale alignment.



3. The reader head mounts using a 3-piece bracket assembly. Vertical bracket and horizontal bracket may be shortened simply by sawing to desired length. Reader head bracket may be offset right or left. Make any modifications needed to the bracket assembly and then install the assembly by using the scale manual specifications for the reader head alignment.



4. Always carefully check for scales overall travel.
5. It is recommended that if your scale is over 32" long that you should use the center support. It slides into the dovetail on the top of the scale and is mounted with one M4 x 35mm SHCS or 8-32 x 1.25 SHCS equivalent and a spherical washer. Center support must be straight and parallel to the scale using the two M6 x 20mm SS. Secure the center support to the scale with two M4 x 12mm SHCS.

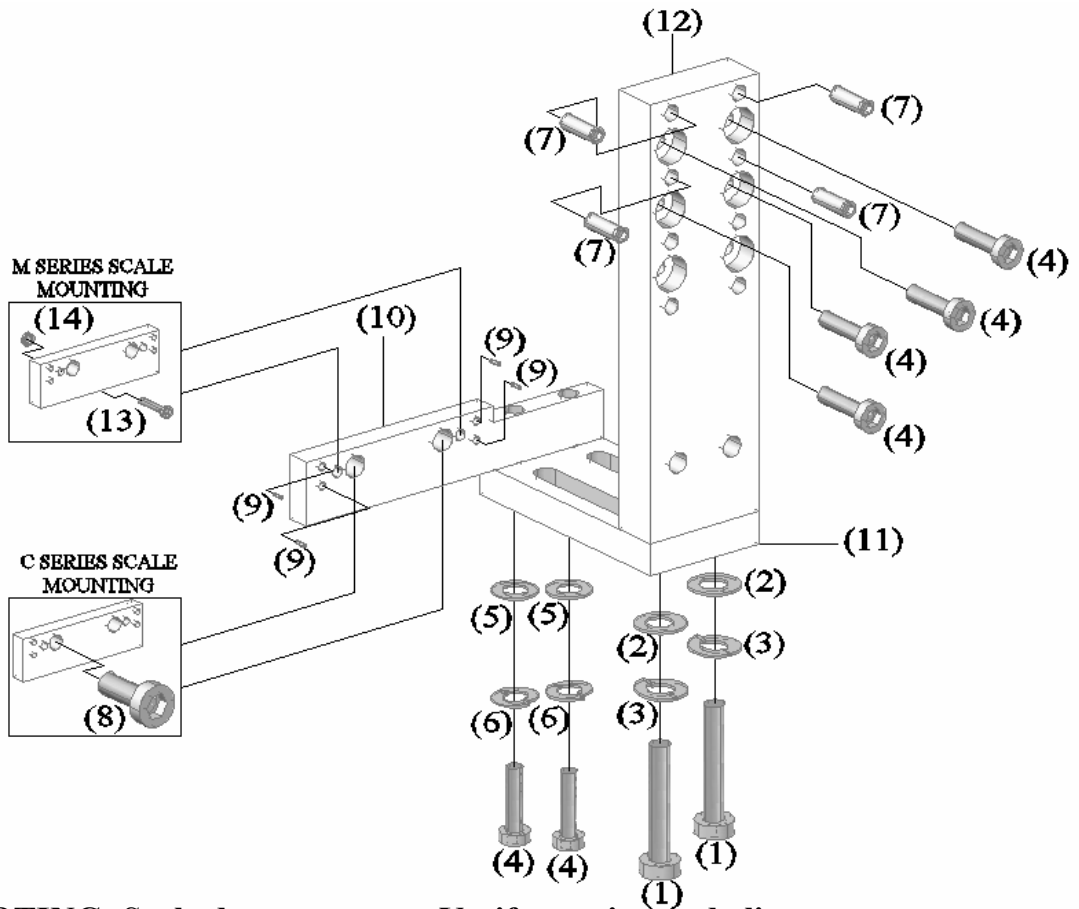


6. Tie up cables properly so they won't be caught by the machine travel.

Brackets and Hardware

Code #	Quantity	Size	Description
1	2	5/16-18 x 1 1/4	S.H.C.S.
2	2	5/16-18	FLAT WASHERS
3	2	5/16-18	LOCK WASHERS
4	8	1/4-20 x 1	S.H.C.S.
5	6	1/4-20	FLAT WASHERS
6	6	1/4-20	LOCK WASHERS
7	4	1/4-20 x 5/8	S.S.
8	2	M8-1.25 x 40mm	S.H.C.S.
9	4	6/32 x 3/8	S.S.
10	1	-	READER HEAD BRACKET
11	1	-	4 INCH HORIZONTAL
12	1	-	12 OR 8 INCH VERTICAL
13	2	8/32 x 1 1/8	S.H.C.S.
14	2	8-32	NYLON INSERT NUT

Recommended Tools	
7/64 Hex Key	9/64 Hex Key
5/32 Hex Key	3/16 Hex Key
1/4 Hex Key	Screwdrivers
Wire Snips	Power Drill
No. 7 Drill	1/4-20 Tap
No. 29 Drill	8-32 Tap
No. 21 Drill	10-32 Tap
F Drill	5/16-18 Tap
Indicator with Base	6mm Hex Key
3mm Hex Key	1.5mm Hex Key



TROUBLESHOOTING: Scale does not count. Verify spacing and alignment.