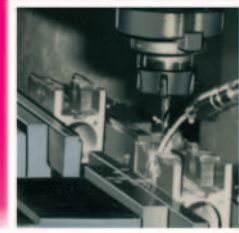


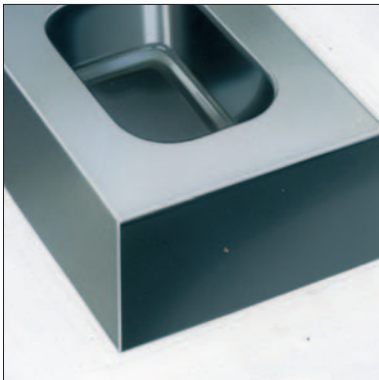
For Milling Machines and Boring Mills

INNOVA



FOR MILLING MACHINES AND BORING MILLS

With a product range of optimum performance, designed to simplify as much as possible the specific operations of milling machines and boring mills while increasing their productivity and ensuring top quality in each process.



MAIN FEATURES

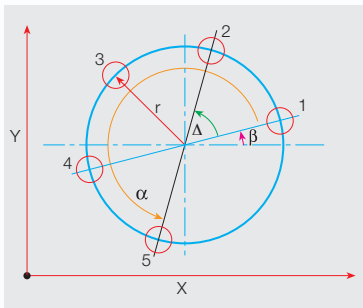
- **Bolt-hole drilling**
The DRO automatically calculates the position of the holes as the operator enters the data requested by it.
- **Linear drilling calculation**
It calculates, memorizes the position and guides the operator when executing linear drilling operations at any angle with respect to the axes with a fixed gap between holes.
- **Tool radius compensation**
In a milling operation with a rounded tool, its radius must be taken into account and it must be added to or subtracted from the position value depending on the machining direction. Once the tool value is entered, it is saved in the DRO's memory.
- **Part centering**
By touching two points of the part with the tool or with a probe, the DRO can calculate the center of the part by simply pressing a key.
- **Up to 20 part zeros (datum points)**
This feature makes it easier to work with several part zeros and may be used to save tool data and hole positions. The DRO offers greater flexibility to the operator.
- **Part angle**
This feature offers the possibility to measure angles in order to avoid part alignment errors. Thus, the inclination of the part may be corrected to obtain the right position.
- **Corner rounding / machining of arcs**
To be used in simple corner rounding or surfaces in arc in a plane defined by two linear axes.



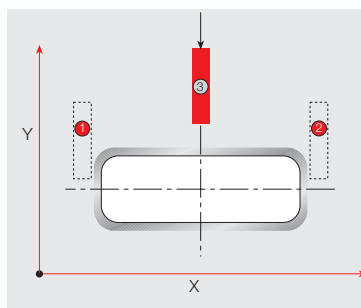
> 20i-M



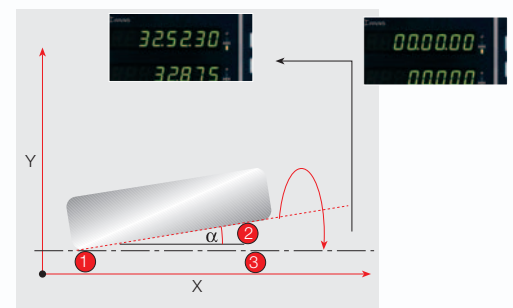
> 30i-M



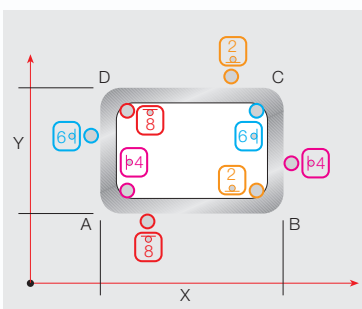
> Bolt-hole drilling calculation



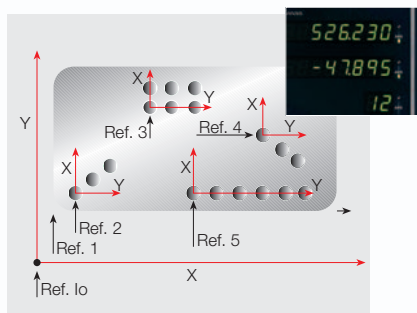
> Part centering



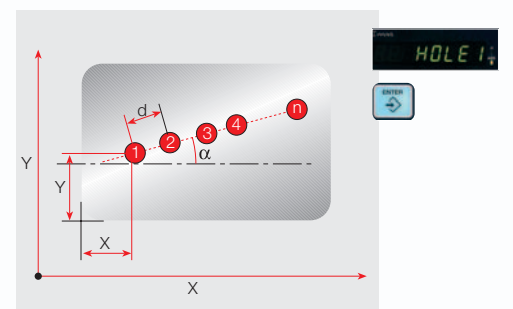
> Part angle



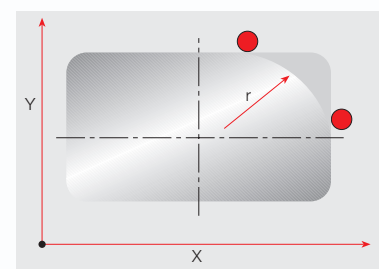
> Tool radius compensation



> Up to 20 part zeros



> Linear drilling calculation



> Corner rounding/ machining of arcs